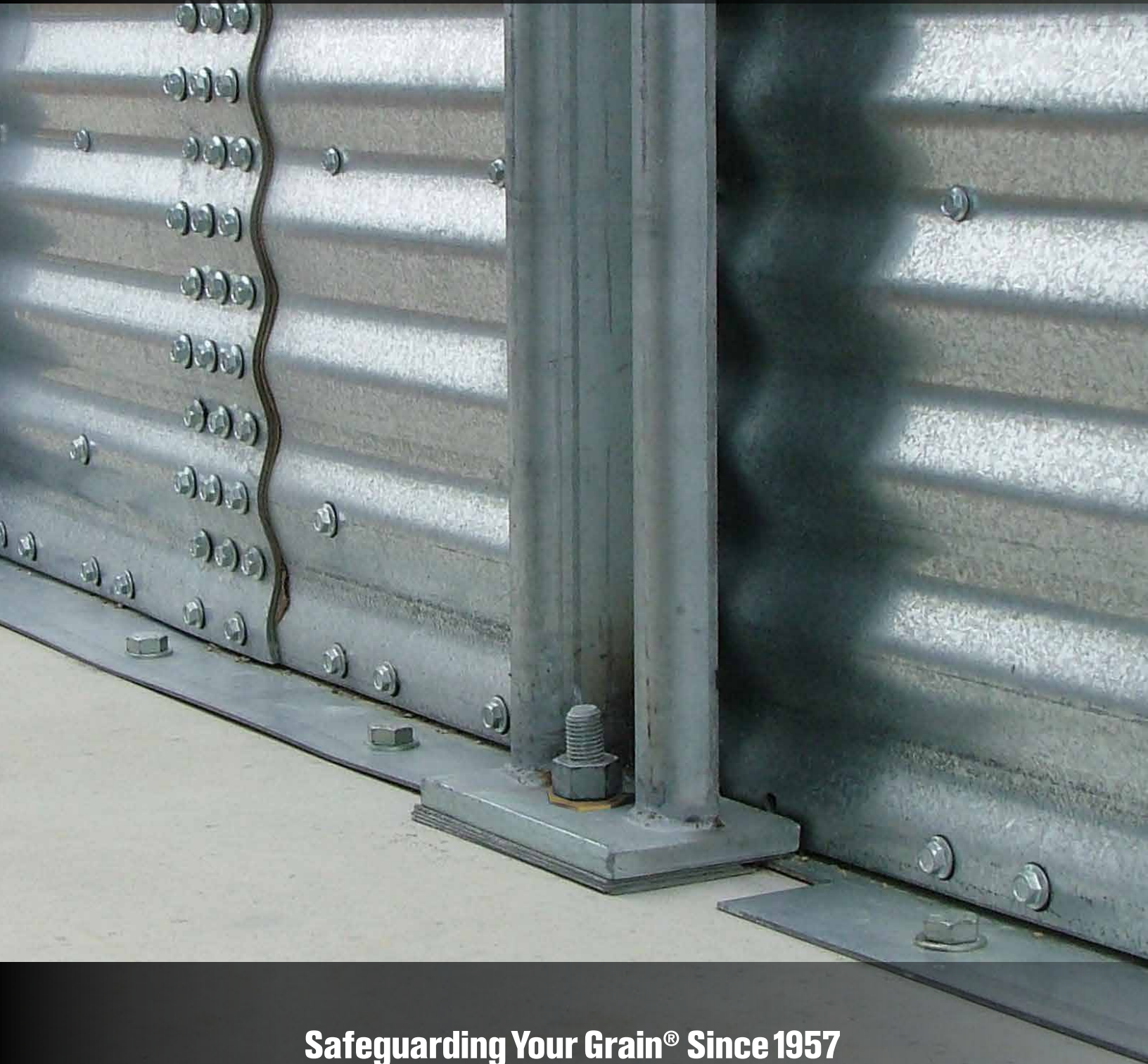




— BROCK SOLID® —

COMMERCIAL BIN ANCHORING SYSTEM



Safeguarding Your Grain® Since 1957

FULL SWEEP® Bin Anchoring System

Brock's FULL SWEEP® Bin Anchoring System allows for the safe operation of single-pass sweeping on all BROCK® Commercial Grain Storage Bins.

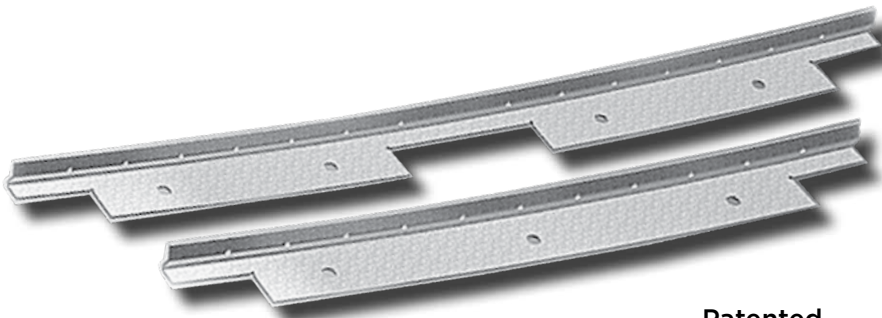
- Saves time and labor.
- Eliminates the need for bin entry during the sweep process.

The patented FULL SWEEP Bin Anchoring System utilizes Brock's heavy base angle that is now standard on all BROCK Grain Bins 72 feet (22 m) in diameter and larger. The heavy base angle:

- Accommodates the horizontal shear loads generated by the single-pass sweep process and aids in the transfer of horizontal shear loads from seismic activity.
- Transfers the shear loads efficiently to the foundation with the aid of anchors placed in pre-punched holes.
- Bolts to pre-punched holes in the bin sidewall body sheets quickly and easily.



Brock's heavy base angle is available to match bin configurations of two- or three-stiffeners per sidewall body sheet.



Patented

Base Angle Anchors Required For Single-Pass Sweep Capability			
NARROW CORRUGATION			
BIN DIAMETER		Stiffeners per Sidewall Body Sheet	Sweep Anchors per Bin
Feet	Meters		
72 Ft.	22.0 m	2	48
		3	NOT USED
75 Ft.	22.9 m	2	100
		3	75
78 Ft.	23.8 m	2	104
		3	78
90 Ft.	27.4 m	2	180
		3	180
105 Ft.	32.0 m	2	210
		3	210
132 Ft.	40.2 m	3	396
156 Ft.	47.5 m	3	468

WIDE CORRUGATION			
BIN DIAMETER		Stiffeners per Sidewall Body Sheet	Sweep Anchors per Bin
Feet	Meters		
72 Ft.	22.0 m	2	48
75 Ft.	22.9 m	2	100
78 Ft.	23.8 m	2	104
90 Ft.	27.4 m	2	180
105 Ft.	32.0 m	2	210

Note: Drill-in anchors for the base angle are required to be one of the following (See Brock's commercial bin installation manuals for complete installation details):

- 1.) Hilti® Kwik HUS Anchors - 3/4-inch (19-mm) diameter x 6 inches (152 mm) long.
- 2.) Hilti® Adhesive Anchors - HAS Super 3/4-inch (19-mm) diameter x 9-5/8 inch (244 mm) long threaded rods with a minimum embedment of 6-5/8 inches (168 mm) using HVU 3/4-inch (19-mm) diameter x 6-5/8 inch (168 mm) long adhesive capsules.

Hilti® is not owned or licensed by CTB and is the sole property of its respective owner.



— BROCK SOLID® —

Safeguarding Your Grain® Since 1957

BROCK GRAIN SYSTEMS

A Division of CTB, Inc.

A Berkshire Hathaway Company

Phone: +1 866.658.4191

www.brockgrain.com

Email: sales@brockgrain.com

BR-2054/202108