

CHORE-TIME® Feed Bins



Our Experience.
Your Success.



Chore-Time's Feed Bins Make Feed Storage Chores Easier & More Convenient

Choose from a wide variety of sizes and optional features.

- » With a variety of models to choose from, Chore-Time's feed bins all come standard with our HYDROSHIELD® Weather Guard, Pneumatic fill and 30° Roof.
- » Optional features include our SPRING-LOCK® Lid, High-Capacity 40° Roof, ACCESS PLUS® Hopper Access Door, SHAKER-PLATE® Material Flow Control, Ladder System Handrail, Ladder Security Door, Boot Slide Actuator and various weigh systems.





Chore-Time Feed Bins

Chore-Time has been providing feed bins to the poultry industry since 1957 and led the way in updating its bin design to include features that provided solutions to common industry problems. Chore-Time's Feed Bin today continues to feature the strength, quality, design and warranty backing that result in a bin you can count on for years of reliable service.

- » Chore-Time's Feed Bins are manufactured to our exacting quality standards in our own factory.
- » Sturdy ladder system is attached to both the bin roof and side wall. Each ladder rung includes a raised, non-skid top surface as well as an opening on the underside to eliminate moisture accumulation within the rung.
- » Body sheets are formed with the standard 68-mm (2.66-inch) corrugation from long-lasting, galvanized steel in gauges ranging from 8 to 20.



STANDARD

Chore-Time's **HYDROSHIELD® Weather Guard** directs moisture to drip off the bin's sidewall and helps keep water off the bin's hopper and boot.

- » Bin lids, collars, hopper sheets and roof panels receive the same careful attention as body sheets.
- » Hoppers are available in 45-, 60- and 67-degree angles to match user requirements based on the feed type to be stored. Roofs feature a 40- or 30-degree angle for maximum filling and to make the fill hole more visible.
- » Bin legs are fabricated from heavy, galvanized steel to make a column-like structure formed with six separate bends or "breaks" for added strength.
- » Bins are assembled using high-strength grade 8.2 bin seal bolts with special JS-1000™ weather-resistant coating. Optional polypropylene-encapsulated head bolts provide enhanced corrosion resistance.
- » All parts are manufactured to engineering design specifications and quality checked to ensure hassle-free assembly and use.

STANDARD with any FLEX-AUGER® Model or 102-mm (4-inch) solid-core auger.

Chore-Time's **Red Translucent, Polycarbonate Boot Transition** offers high strength and impact resistance. Available in straight-out and 30-degree configurations, the transition retrofits to most existing feed bins with 406-mm (16-inch) diameter hopper openings. Optional clear model also available.



Features and Options for Chore-Time Feed Bins Performance



Our Experience.
Your Success.



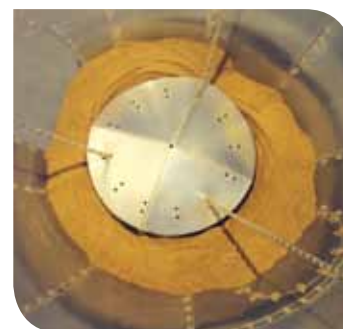
OPTIONAL

Our **SPRING-LOCK® Feed Bin Lid and Opener** (patented) aids in biosecurity by permitting bins to be opened from a remote location. Bins are easily opened with one hand, yet feature a positive, spring-aided closing action. When open, the lid slides down and out of the way of the feed truck's auger.



OPTIONAL

Chore-Time's innovative **SHAKER-PLATE® Material Flow Control** is suspended inside the feed bin's hopper. The SHAKER-PLATE Unit vibrates to create mass flow for the stored feed. The economical-to-operate unit automatically activates whenever the unloading auger is running.



OPTIONAL

Convenient Handrails (patented) are available for our sturdy ladder system.



OPTIONAL

By removing a few bolts, our **ACCESS PLUS® Door Panel** lifts out for easier access to the inside of the bin for cleaning chores between flocks.



Chore-Time's Mechanical
WEIGH-MATIC® System

Select Hopper Bin Sizes (Additional Models Also Available)

Pneumatic Fill Including 30° Roof and HYDROSHIELD® Weather Guard

PART NUMBER	CAPACITY* 641 KG/M ³		HEIGHT TO FILL METERS
	TONNAGE	CUBIC METERS	
1.8-Meter Diameter Bins w/60° Hopper			
45-00601	2.7	4.2	3.35
45-00602	4.0	6.4	4.17
45-00603	5.4	8.4	4.98
45-00604	6.8	10.6	5.79
2.1-Meter Diameter Bins w/67° Hopper			
45-00721	4.2	6.5	4.29
45-00722	6.0	9.4	5.11
45-00723	7.9	12.3	5.92
45-00724	9.7	15.2	6.73
45-00725	11.5	18.0	7.54
45-00726	13.4	20.9	8.36

*Mechanically filled model with 40° roof has 10% to 15% more capacity.

PART NUMBER	CAPACITY* 641 KG/M ³		HEIGHT TO FILL METERS
	TONNAGE	CUBIC METERS	
2.7-Meter Diameter Bins w/60° Hopper			
45-00901	7.1	11.2	4.47
45-00902	10.4	16.0	5.28
45-00903	13.3	20.8	6.10
45-00904	16.4	25.8	6.91
45-00905	19.4	30.3	7.72
45-00906	22.5	35.1	8.53
45-00907	25.4	39.8	9.35
3.7-Meter Diameter Bins w/60° Hopper			
45-01202	20.3	31.7	6.32
45-01203	25.7	40.1	7.14
45-01204	31.1	48.6	7.95
45-01205	36.5	57.0	8.76
45-01206	41.9	65.5	9.58
45-01207	47.3	73.9	10.39

Feed Weighing Systems

Our CHORE-TRONICS® Feed Inventory System provides an economical means for managing and monitoring feed stored in feed bins on the farm. Producers easily check feed bin weights by using a read-out screen. Getting precise weights aids in better managing feed inventories and helps to prevent costly out-of-feed events. Designed to work as a stand-alone system, the feed inventory system also can be connected with Chore-Time's popular C-CENTRAL™ Software to provide remote location and multiple house monitoring.



Load Cells handle up to 4,500 kg (10,000 pounds) per feed bin leg.



Find your nearest distributor in our online distributor finder.

www.ctbworld.com



**Our Experience.
Your Success.**

Chore-Time Europe B.V.
Nederweerdterdijk 4
5768 PH Meijel - The Netherlands
Tel. +31 (0)77-324 1070
Fax +31 (0)77-324 1071
E-mail: info@choretime.nl

Chore-Time Europe Sp z o.o.
ul. Poznanska 1
62-060 Strykowo - Poland
Tel. +48 61 8197 060
Fax +48 61 8197 061
E-mail: info@choretime.pl